



Establishing the Newham Safeguarding Children Partnership (NSCP)

1. This paper sets out the decisions made by the defined statutory partners in Newham to implement the requirements of the Children and Social Work Act 2017 and Working Together to Safeguard Children 2018, in respect of how local safeguarding arrangements are organised. These arrangements must include:
 - Arrangements for the safeguarding partners to work together to identify and respond to the needs of children in the area.
 - Arrangements for commissioning and publishing local child safeguarding practice reviews.
 - Arrangements for independent scrutiny of the effectiveness of the arrangements.
 - Who the three local safeguarding partners are, especially if the arrangements cover more than one local authority area.
 - Geographical boundaries (especially if the arrangements operate across more than one local authority area).
 - The relevant agencies the safeguarding partners will work with; why these organisations and agencies have been chosen; and how they will collaborate and work together to improve outcomes for children and families.
 - How all early year's settings, schools (including independent schools, academies and free schools) and other educational establishments will be included in the safeguarding arrangements.
 - How any youth custody and residential homes for children will be included in the safeguarding arrangements.
 - How the safeguarding partners will use data and intelligence to assess the effectiveness of the help being provided to children and families, including early help
 - How inter-agency training will be commissioned, delivered and monitored for impact and how they will undertake any multi-agency and inter-agency audits
 - How the arrangements will be funded.
 - The process for undertaking local child safeguarding practice reviews, setting out the arrangements for embedding learning across organisations and agencies.

- How the arrangements will include the voice of children and families.
 - How the threshold document setting out the local criteria for action aligns with the arrangements.
2. The defined partners in Newham are Newham Council, NHS Newham Clinical Commissioning Group and Newham and Waltham Forest Police. All existing agencies represented on the current LSCB will continue as members of the NSCP. The many other agencies with child safeguarding responsibilities in Newham will be linked together and supported through a Safeguarding Children Network in the Borough.
 3. Development work will be undertaken to include children, young people and parents in the work of the new Partnership.
 4. The name of the partnership will be the Newham Safeguarding Children Partnership (NSCP).
 5. All of the arrangements set out below will be implemented by 29 September 2019.
 6. NSCP will continue to have an independent chair who will chair the Executive team and also oversee the new teams in the revised NSCP structure. Appendices 1 and 2 below show the old and new structures.
 7. The new structure will emphasise a teamworking approach, to signify a shift from the current structure of Board and Committees. This shift aims to achieve a more dynamic and agile set of arrangements which produce stronger measurable outcomes.
 8. The new Practice Review Team will have oversight of all Rapid Reviews, Child Safeguarding Practice Reviews and the required two-way process with the national Child Safeguarding Practice Review Panel, in line with the new statutory requirements.
 9. The NSCP will continue to be supported by the current Business Manager and her assistant, in order to provide continuity. The Business Manager will in future be responsible for the NSCP Annual Report and Business Plan.
 10. NSCP is exploring arrangements to create a new Child Death Review (CDR) function across Newham, Waltham Forest, Tower Hamlets, Hackney and the City of London, to increase the footprint to the 60 required to be in line with the new Child Death Review, Statutory and Operational Guidance (England) October 2018.
 11. Core funding will continue at the current level but consideration will be given to increasing the number of days in the contract for the Independent chair, to reflect the sizeable implementation task and load ahead, especially during the transitional year after September 2019.
 12. In order to ensure the work of NSCP and other partnership bodies in Newham is successfully co-ordinated, a new Local Strategic Partnership (LSP) is being developed, so that partnership working is cemented at the highest political and

strategic levels in the Borough. Outcome indicators for partnership working will be established and measured annually.

WHAT WILL CHANGE AND WHAT WILL STAY THE SAME?

What will change?

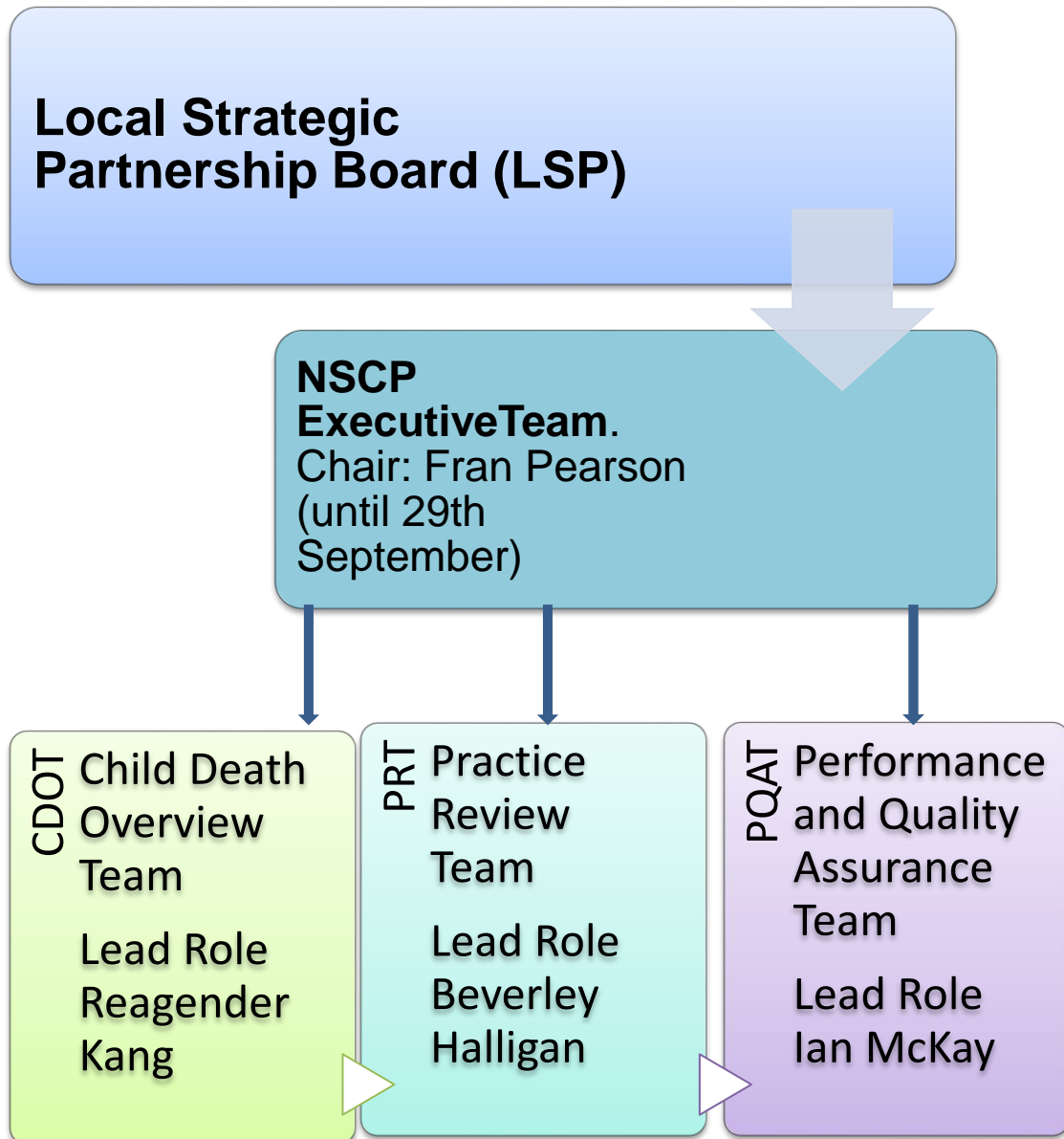
A new Executive Team	The current Executive Board will become an Executive Team, in recognition of the need for stronger ownership, teamwork and delivery. The team will manage the transition from administering a large process-driven structure to an outcomes framework with defined achievements.
Board/Partnership Membership.	Membership will be developed to identify the right senior executive or officer to sit on the LSP and the right professional specialist with sufficient seniority to be the lead officer for the SCP. Education will also be defined as the 4 th main partner within Newham and will be suitably represented to demonstrate this.
Less Subgroups.	There will be less subgroups and other means of bringing issues from Health and other agencies into the Executive Team will be identified. Essential business will be carried out within defined teams such as the new Practice Review team rather than exclusively at meetings. This is to place the emphasis on teamwork and delivery. A model of Delivery Groups, some across the Children and Adults Boards/Partnerships will be put in place, where it is not possible to consider an issue in isolation. Some professional time will be freed up as a result.
A greater focus on 'Think Family'	By joining up meetings and agendas across Children and Adults such as responding to exploitation in all its forms gives a greater opportunity for joint working and to 'think family'.
More joint working across the Children and Adult Partnership/Board	Two multi agency stakeholder events each year will be built into the Implementation Plan based on identified priorities such as neglect, mental health problems or exploitation.

What will stay the same?

Independent Chair	The role of independent chair will continue, to keep the focus on holding the main agencies to account for delivery. The role of scrutineer was considered as an alternative but this is mostly being used where existing partnership working is strong, where there are good datasets and evidence bases across agencies in use and where practice is good to outstanding.
A central team to support the Partnership	There will still be the central team run by the Business Manager. Consideration will be given to either expanding the team to make sure all business can be carried out in the new arrangements or defining a

	quantum of specialist time from corporate functions which can be made available to the Executive Team e.g., better data and use of available intelligence so that strategies and decisions can be more evidence-based.
Keeping the things that work well	Some multi-agency protocols and audits have influenced practice e.g., the protocol on children being discharged from hospital. The 2018 re-audit of this was positive. This capacity and capability will be built into the new arrangements.
Retaining key individuals	As well as the interim Chair and business support team, some other individuals have shown great commitment and kept the show on the road during challenging times. These individuals will be supported to stay on so that proven expertise is retained.

PROPOSED STRUCTURE



Signed by the statutory partners in the Newham Safeguarding Children Partnership

Borough Commander ;

Newham and Waltham Forest Police
Basic Command Unit

Richard Tucker

Richard Tucker

Chief Executive

Althea Loderick

Newham Council



Director of Quality and Safety,
Newham, Tower Hamlets and
Waltham Forest CCGs

Chetan Vyas



NHS Newham Clinical
Commissioning Group

Date:

29 June 2019

Appendix 1.

Current LSCB Structure Chart; June 19

